



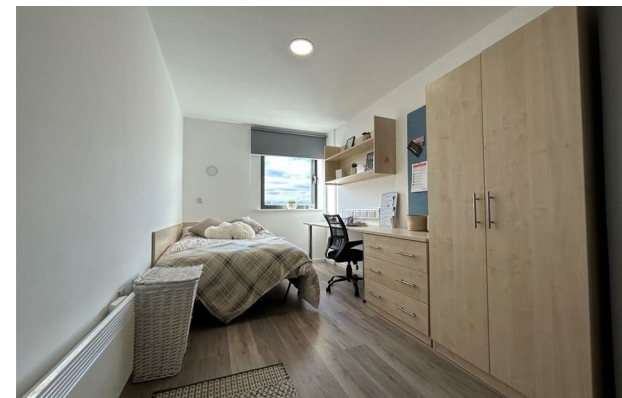
North Church Street | | Nottingham | NG1 4BR

£139 Per week



North Church Street |
Nottingham | NG1 4BR
£139 Per week

NOTTINGHAM | STUDENT | SEPTEMBER



- Social and study spaces
- Outdoor courtyard
- Bike storage
- Onsite laundry facilities
- High speed Wi-Fi
- Contents insurance
- Utilities including water and heating
- Excellent location
- Strong community
- Student only

| Energy Efficiency Rating | | Current | Potential |
|--|--|----------------------------|-----------|
| <i>Very energy efficient - lower running costs</i> | | | |
| (92 plus) A | | | |
| (81-91) B | | | |
| (69-80) C | | | |
| (55-68) D | | | |
| (39-54) E | | | |
| (21-38) F | | | |
| (1-20) G | | | |
| <i>Not energy efficient - higher running costs</i> | | | |
| England & Wales | | EU Directive 2002/91/EC | |

Lower Ground Floor
27 Ridley Place
Newcastle upon Tyne
Tyne and Wear
NE1 8JN
0191 6403450
info@propertybynest.co.uk